



Federation of computing and storage resource for a data-driven future

Tiziana Ferrari
Director, EGI Foundation

10-06-2024
EODC Forum 2024

TLP: WHITE Public

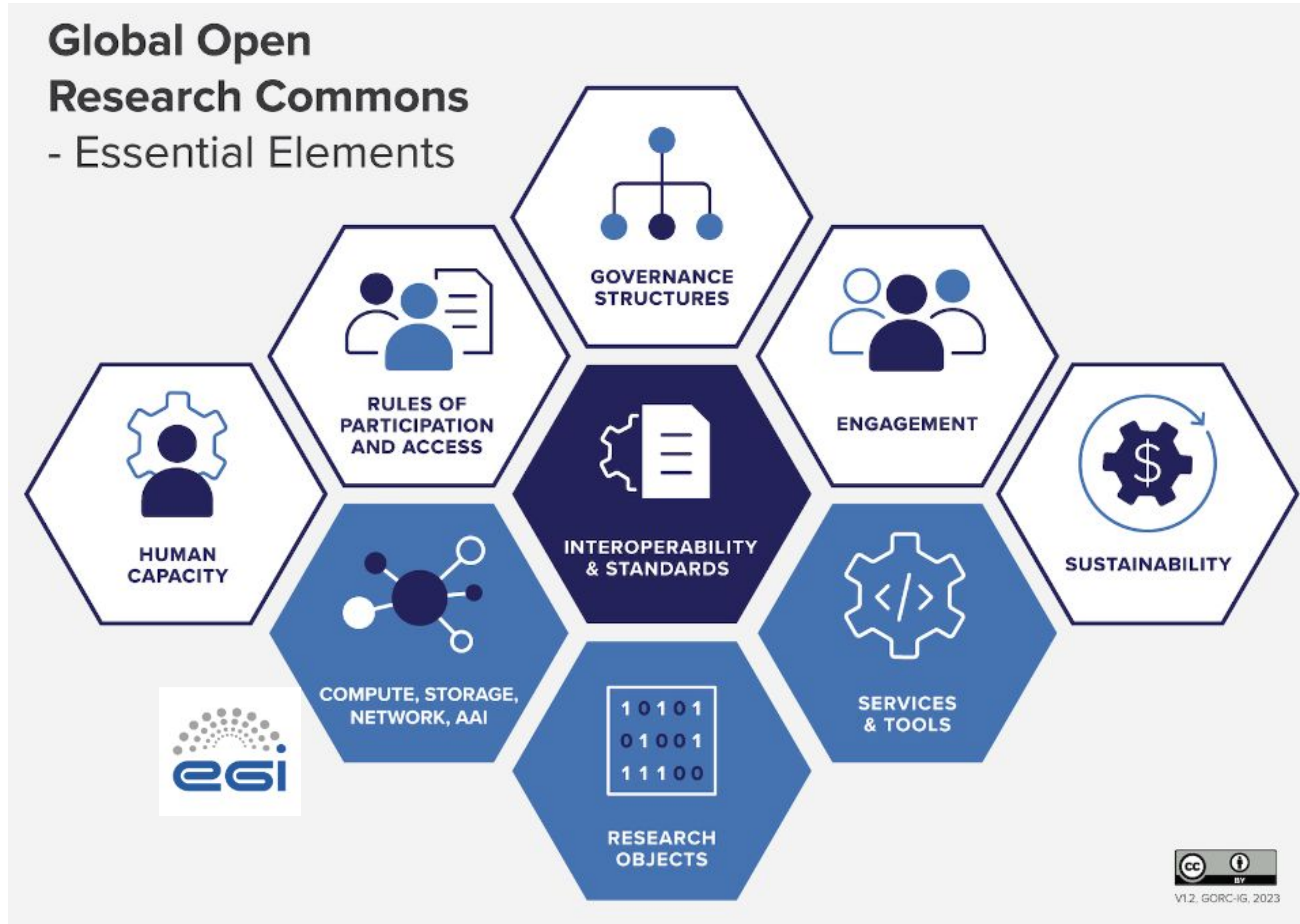
European digital infrastructures for research

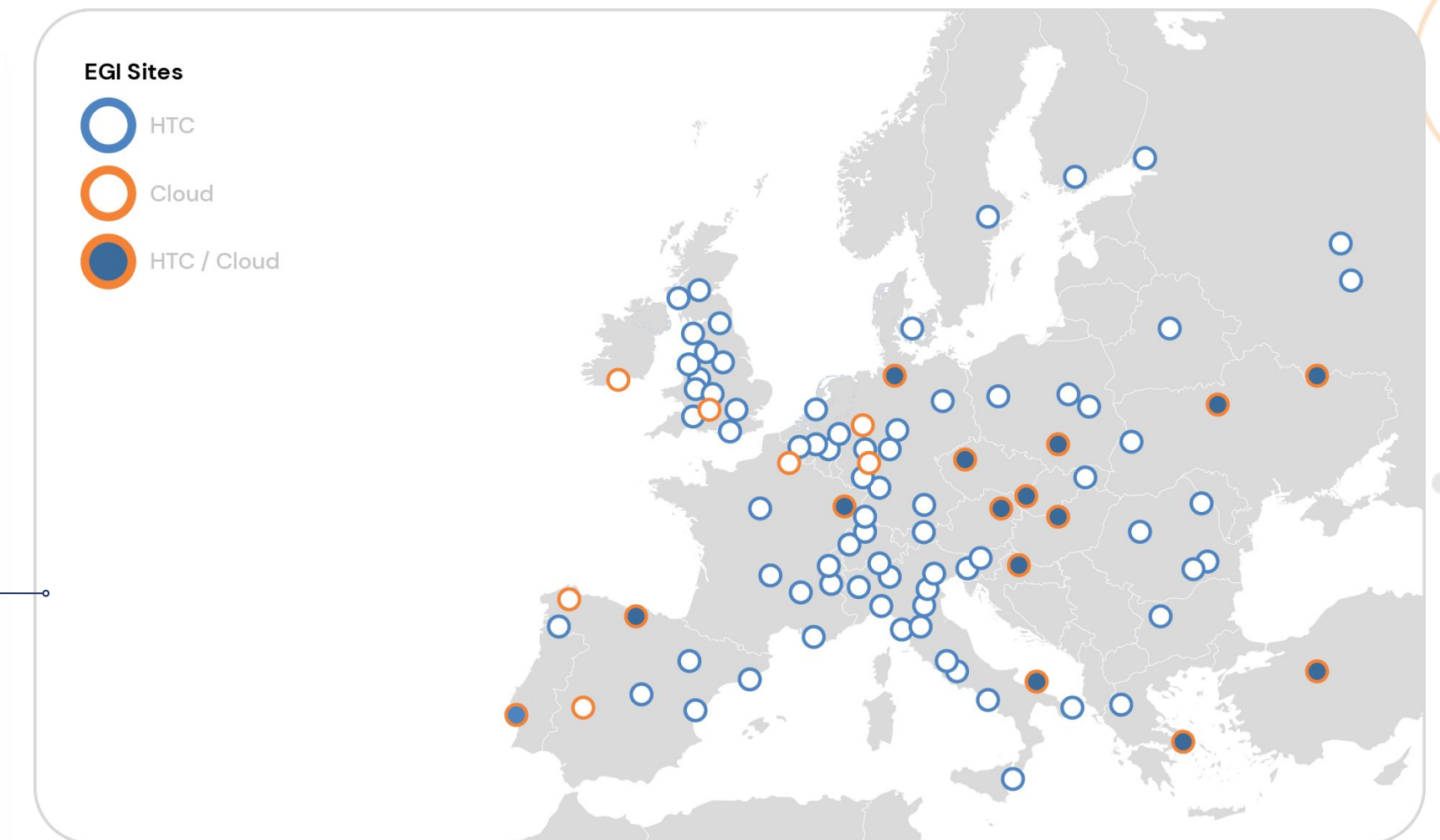
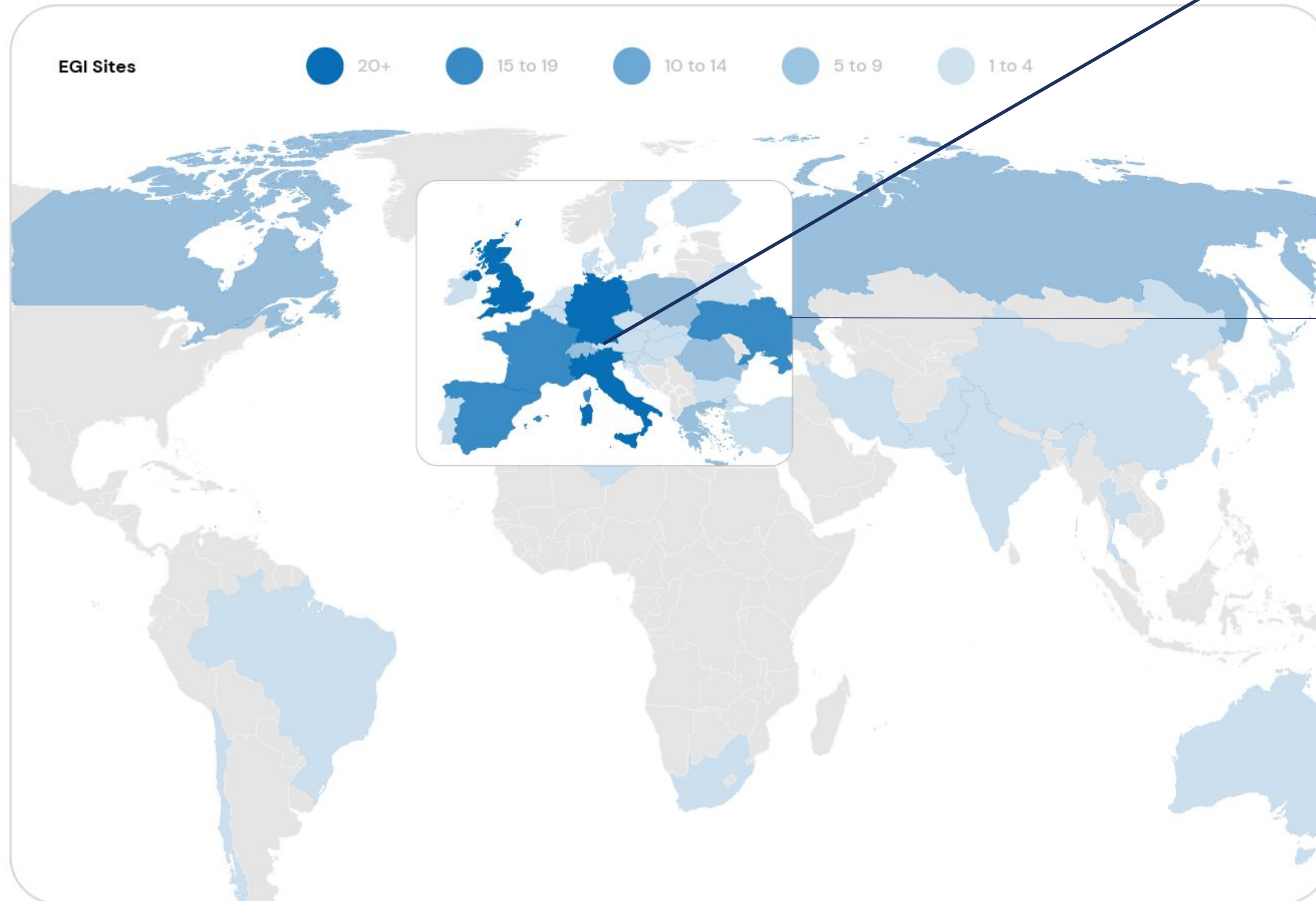
› European coordinated efforts federating national digital assets (data, services, human networks) to support research at pan-European and international level

European digital infrastructures for research

› National digital sovereignty
Invest nationally, access
globally for European
excellence in science

The digital infrastructure conceptual model according to RDA



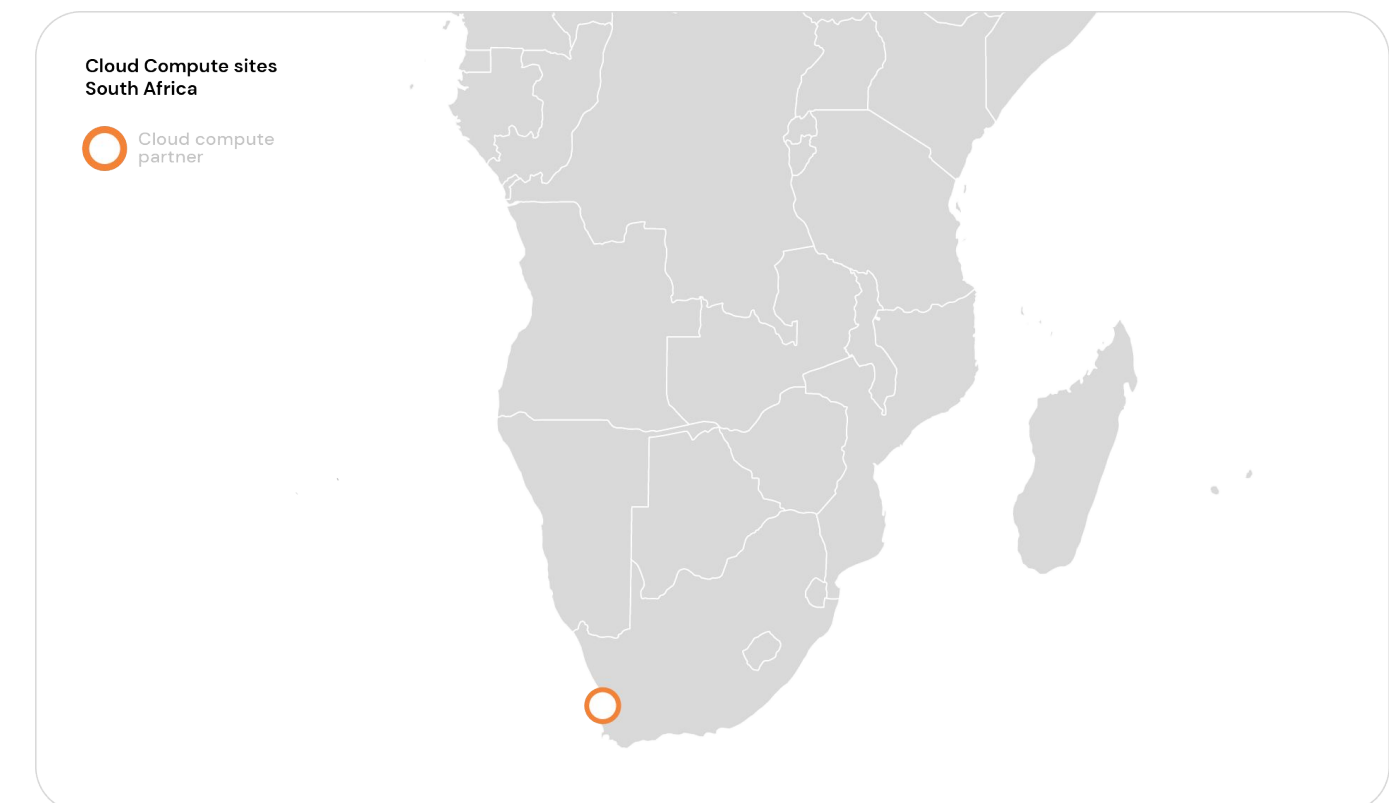
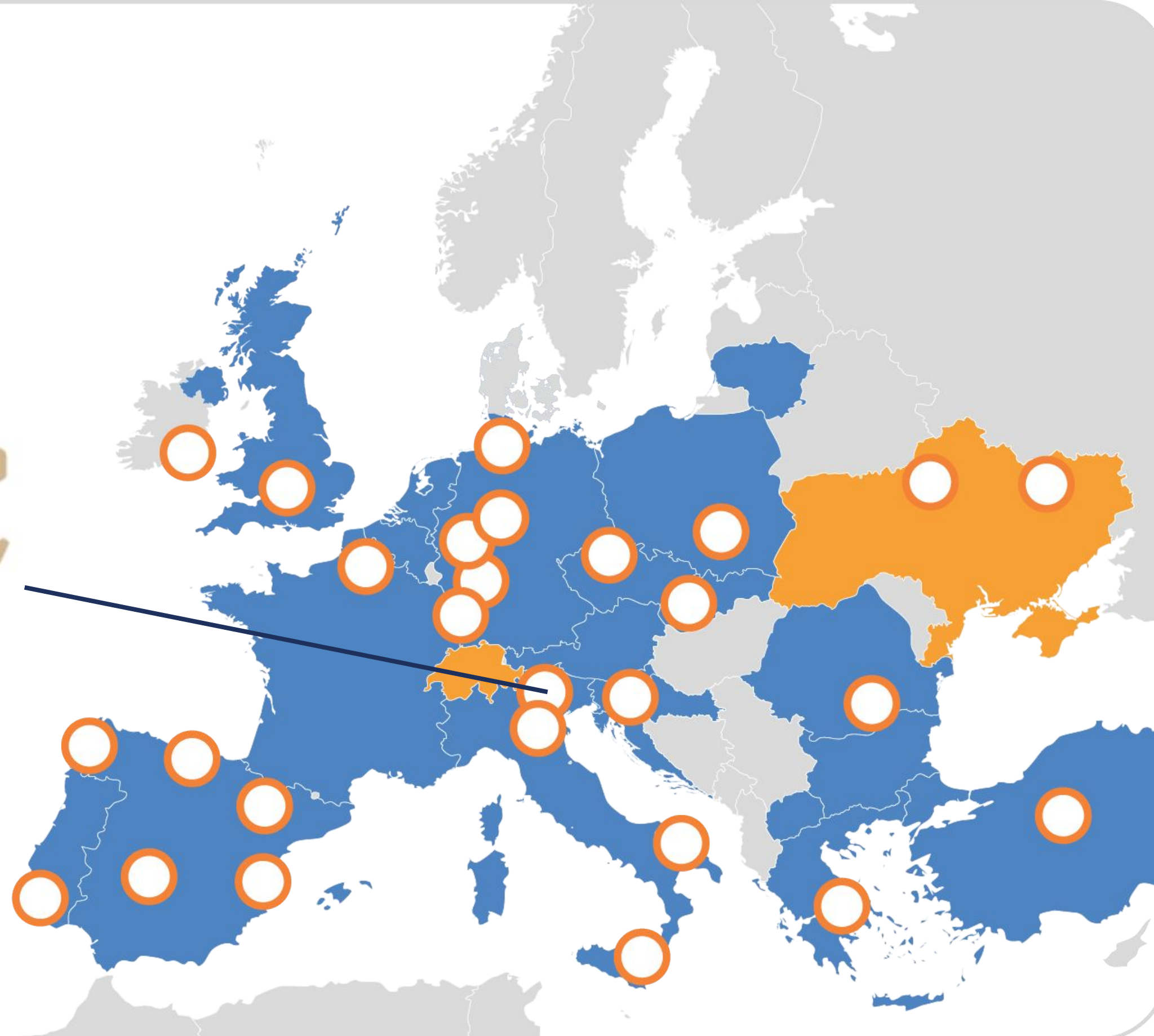


EGI federates research data centres to bring computing next to (distributed) research data

Cloud Compute sites



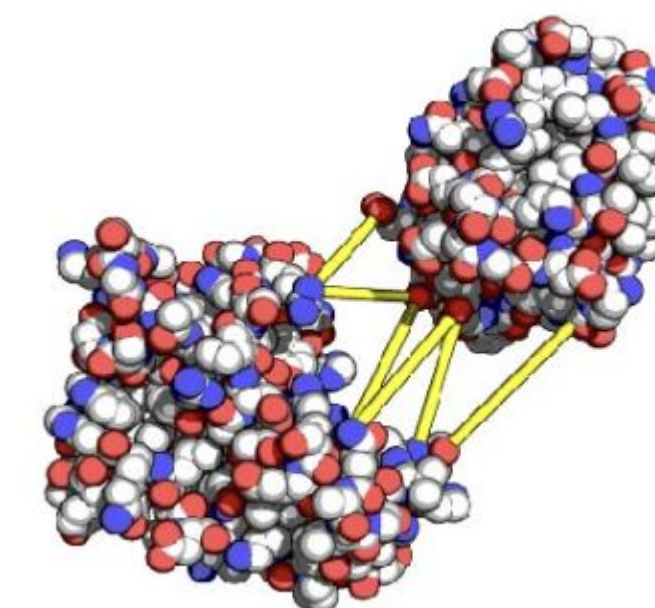
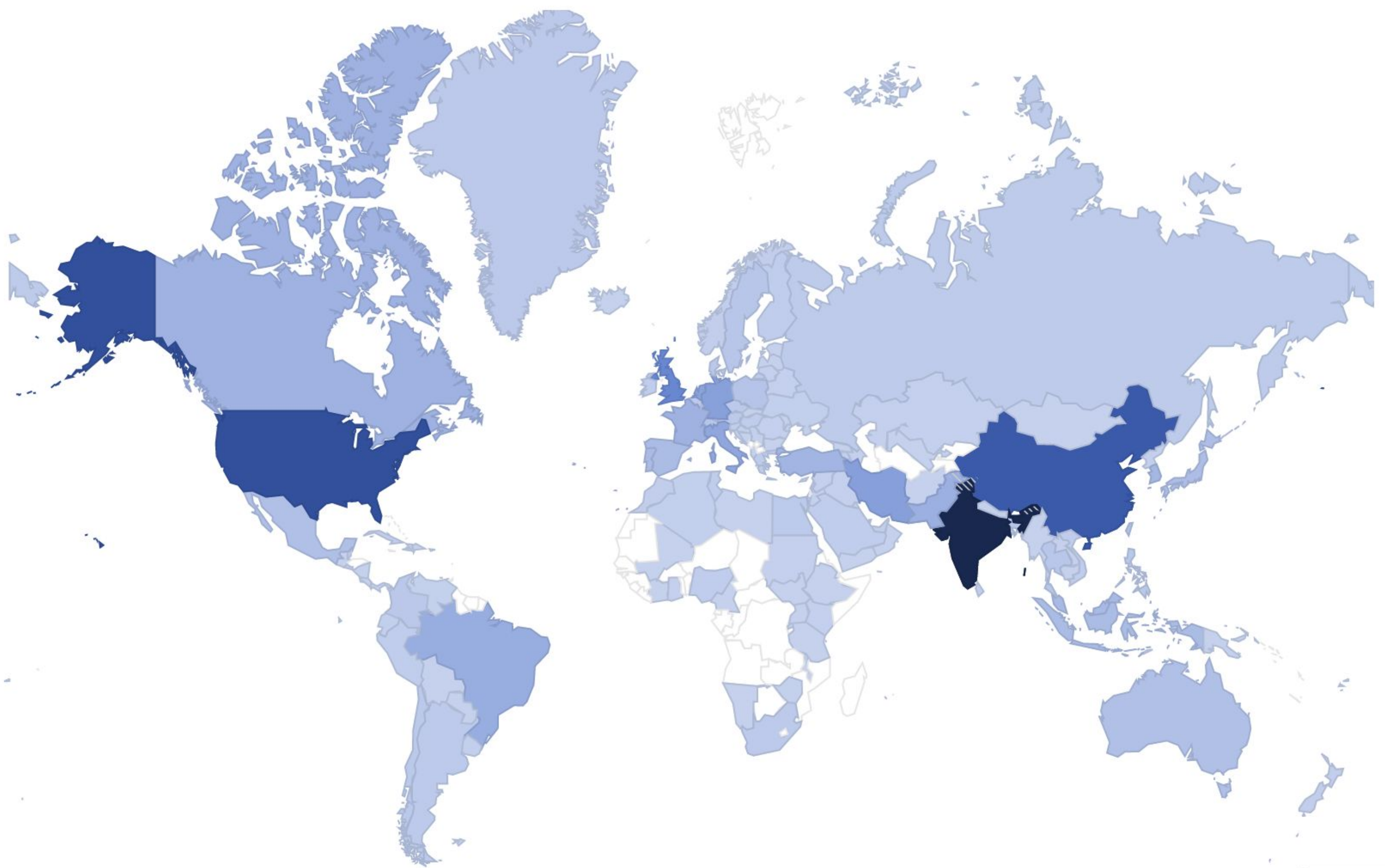
eodc



The structural biology use case – Opening tools for molecular docking simulations addressing the COVID-19 pandemic

Worldwide User Map

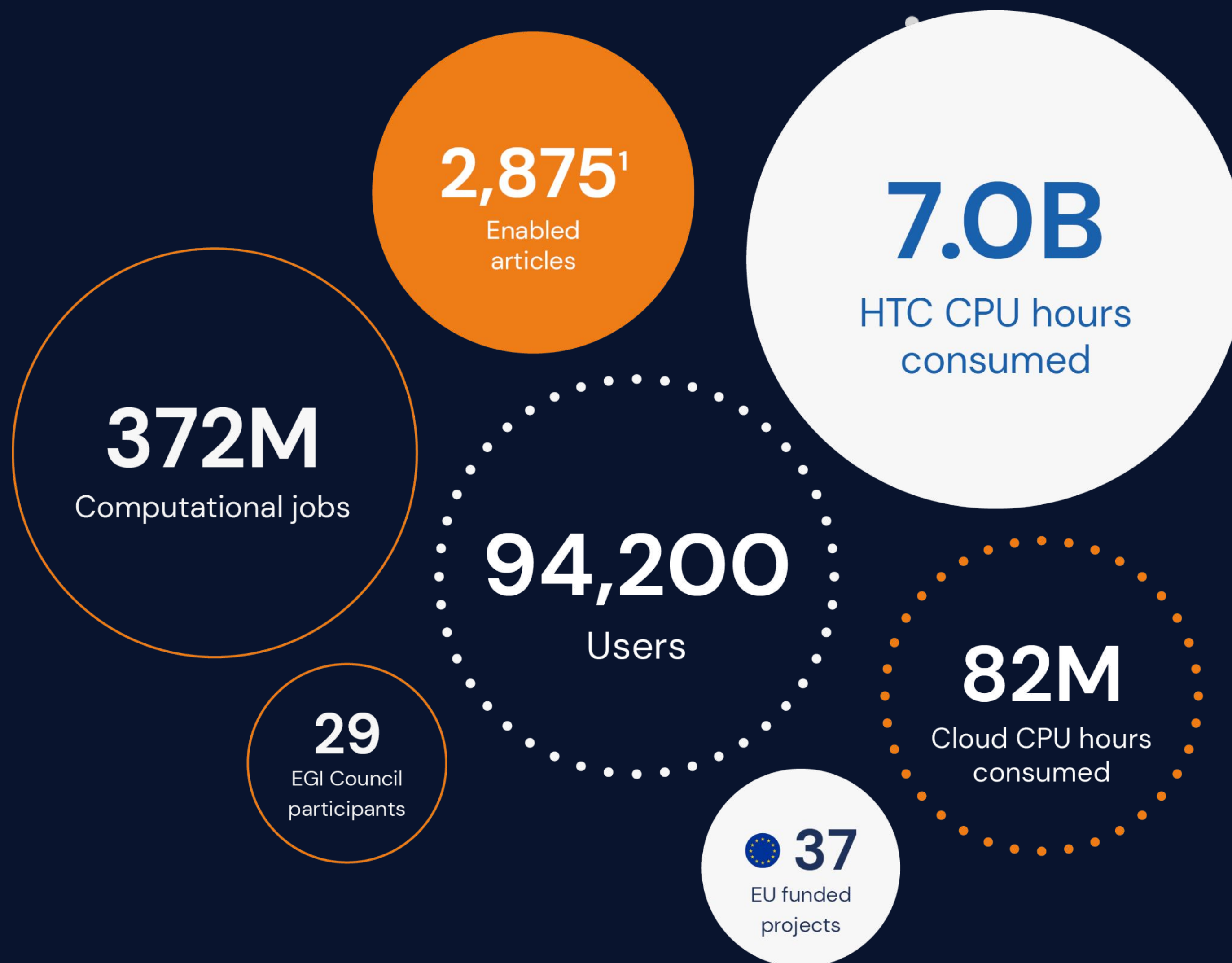
The HADDOCK web portal is being used by **46298 users** accross **146 countries!**



A joint effort of
WeNMR, EGI
Federation (Europe),
Open Science Grid
(USA) and many other
international partners



EGI in Numbers (annual statistics 2023)





EGI Annual Report 2023

Propelling Research and Innovation
Through Collaboration and Support



Key Numbers

95,000

Total number of users

+10.200

New users in 2023

Top 5 Cloud Communities

WeNMR

41K

NBIS

21K

Biomed

1.5K

BioISI

1K

ENVRI

967

By number of registered users

Top HTC Communities

Atlas, CMS, ALICE, LHCb,
Belle II, Virgo

Essential Partners and the Largest Adopters

Research infrastructures (RI) and research communities

13

new scientific communities

23

RIIs from the ESFRI roadmap

49

RIIs of pan-European scope using our services

1

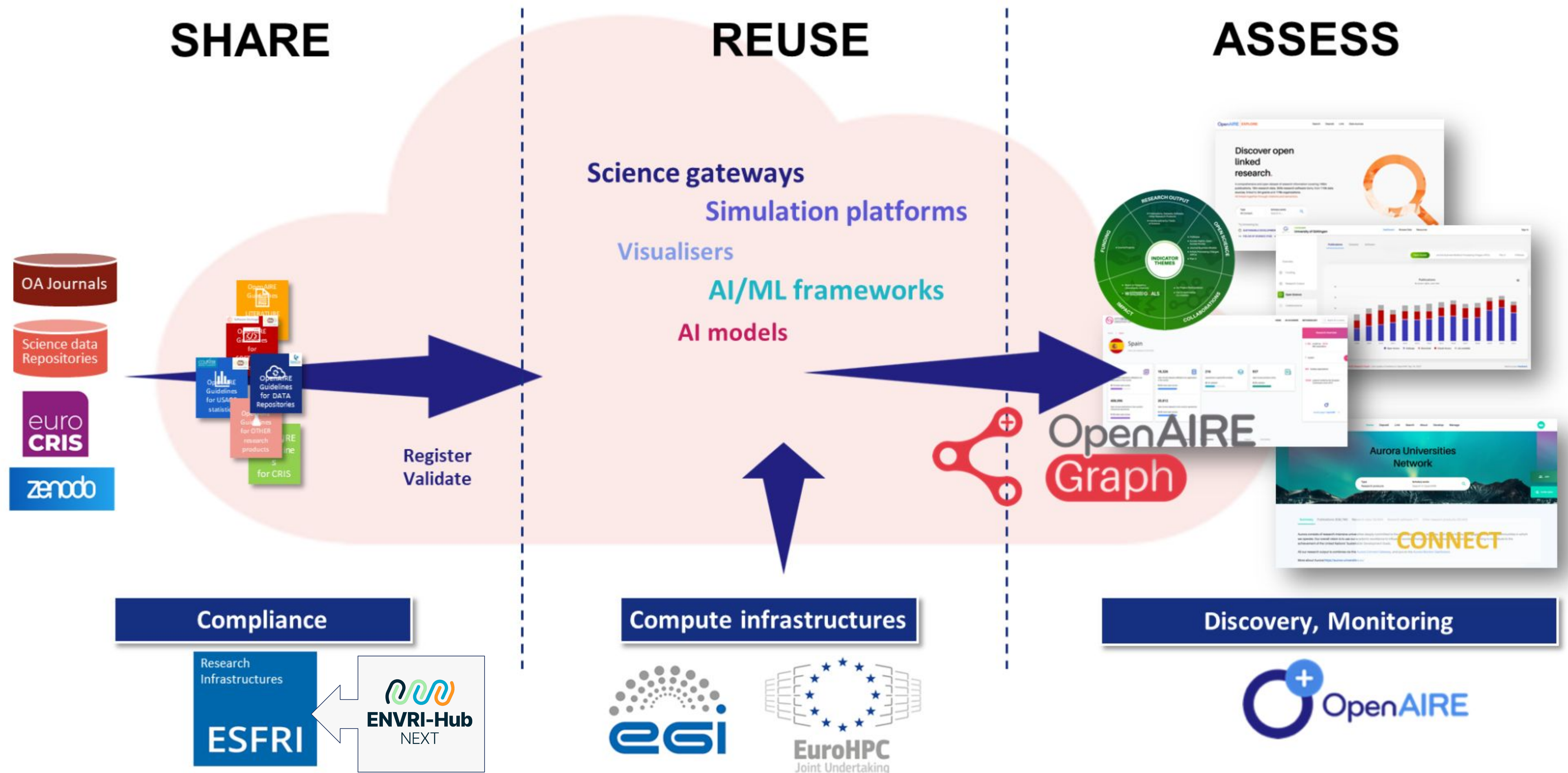
new RIIs engaged in 2023

However... we are still far from the full realisation of the research data value chain

We need long-term national and European investments

- › For Data, compute and storage integration and R&I
- › For alignment of European and national actors
- › For national research infrastructures open for trans-national access

Supporting the entire open science cycle



- **Harnessing the Potential of Data**
 - By facilitating easy access and interoperability across subdomains, we will empower researchers to address complex questions and develop groundbreaking solutions.
- **Guiding Light - Essential Climate Variables**
 - The project is guided by the science-based framework of ECVs, a set of critical measurements essential for monitoring climate change and its impacts. This focus allows us to deliver targeted insights and evidence-based solutions.
- **Integration is Key**
 - ENVRI-Hub NEXT champions the integration of ENVRI RIs. By fostering collaboration and synergies, we will provide researchers with a unified platform, enabling them to conduct cross-disciplinary research.

Unified Access

Interoperability

ECV-Focused

Open & Transparent

Cloud-based

1

ENVRI Community

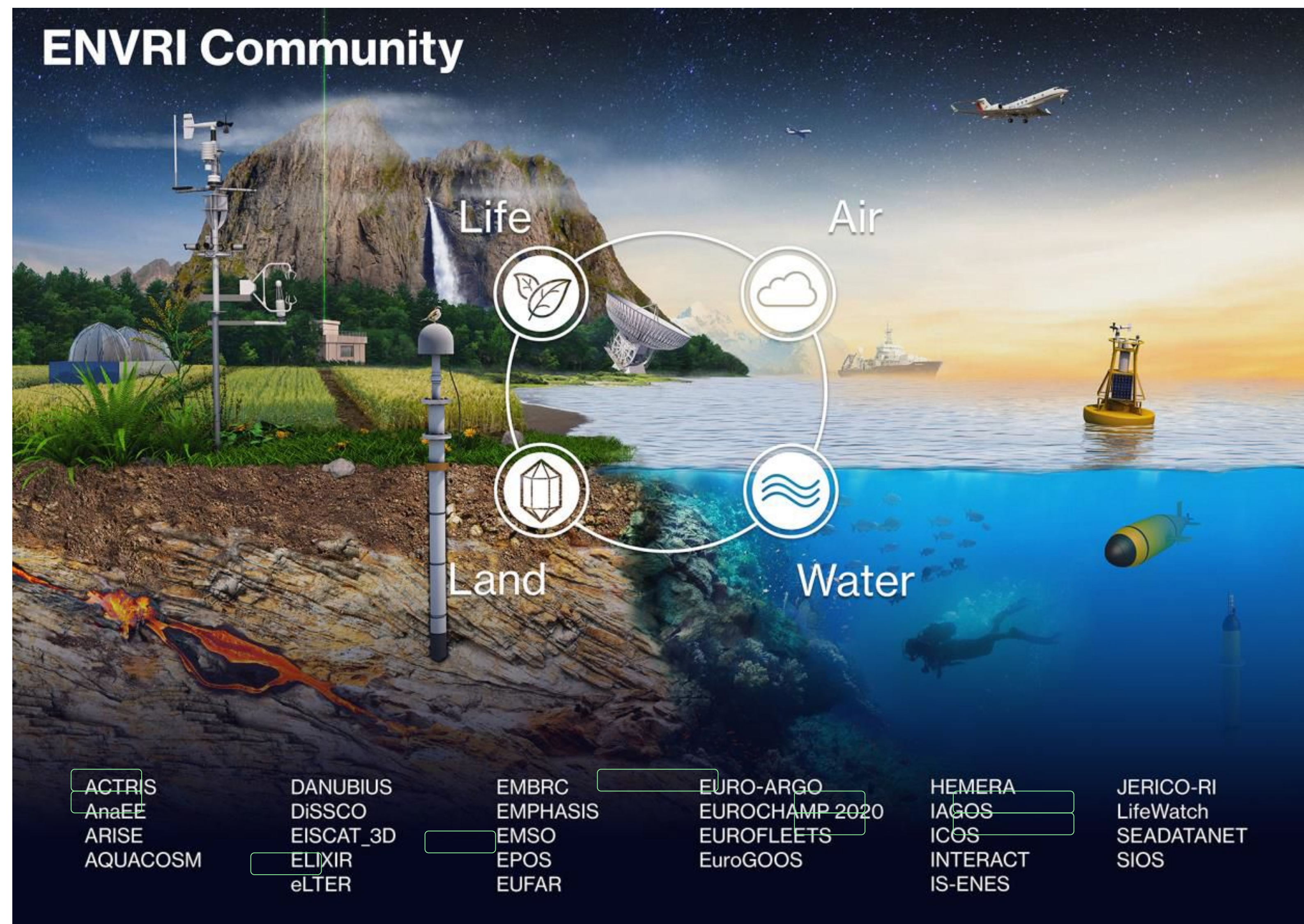
(Supported by the EU-funded cluster projects ENVRI, ENVRIplus, ENVRI-FAIR, and currently, by the ENVRI-Hub NEXT)

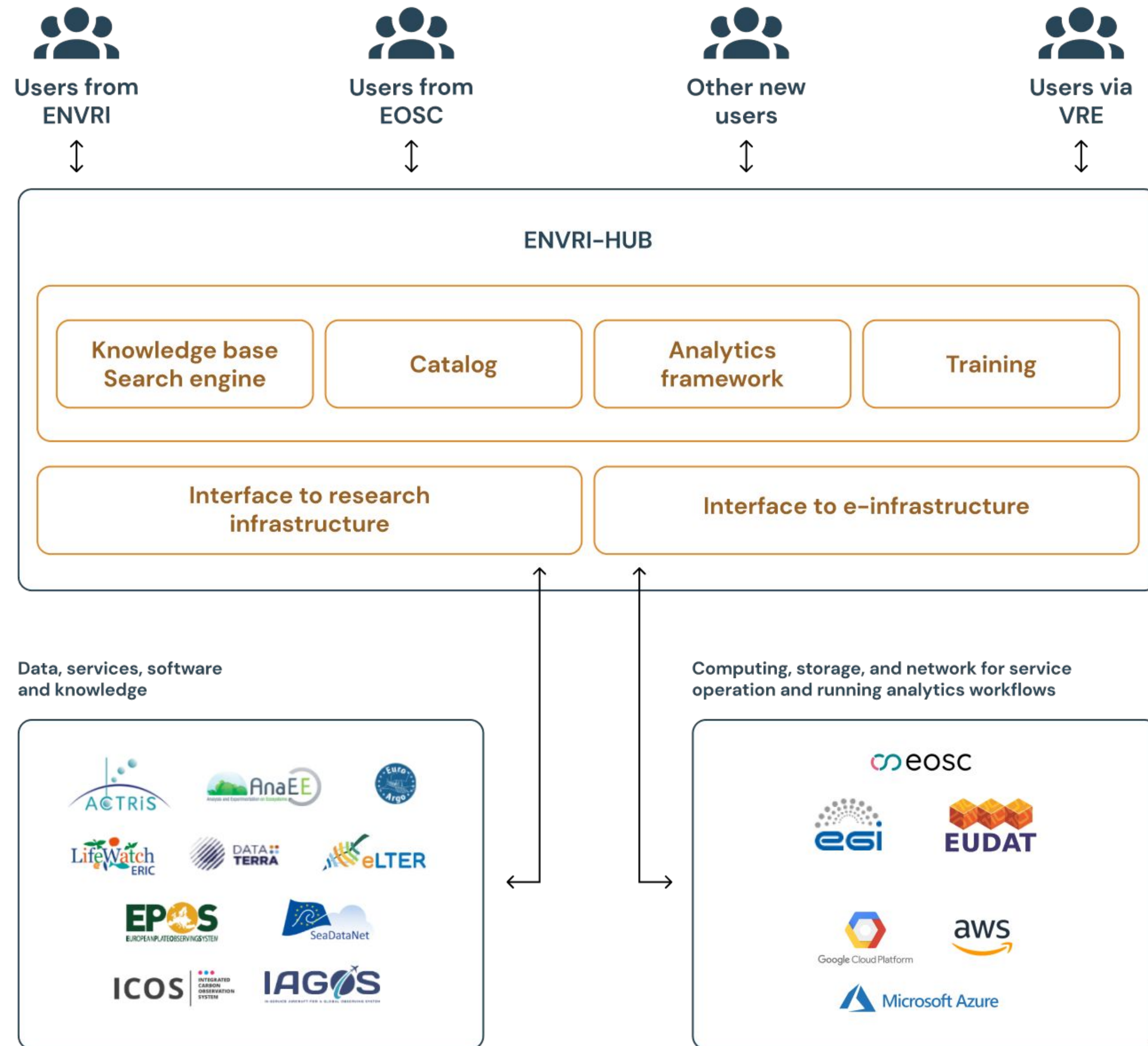
4

Environmental domains

27

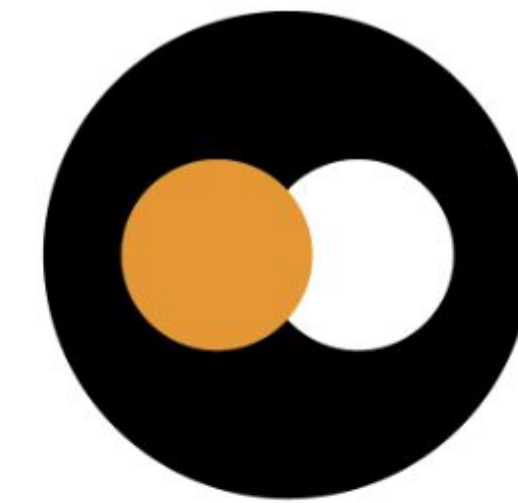
Research Infrastructures





Project details

interTwin co-designs and implements the prototype of an interdisciplinary Digital Twin Engine (DTE) – an open source platform based on open standards that offers the capability to integrate with application-specific Digital Twins (DTs). Its functional specifications and implementation are based on a co-designed interoperability framework and conceptual model of a DT for research – the DTE blueprint architecture. The ambition of interTwin is to create consensus on a common approach to the implementation of DTs that is applicable across the whole spectrum of scientific disciplines that will facilitate developments and interoperability across different DTs.



interTwin

- **Democratisation of AI and research data empowers European researchers without specialised AI and technical knowledge, with open-source datasets, integrated computing infrastructure and tools so that they can build innovative research software**
- **Europe has the potential of addressing this need by integrating national capabilities and by sustaining advanced computing, datasets, models, software, training and user support to European researchers**
- **We strongly advocate for continuous funding from national and European funding agencies to support this vision!**



Contact us

contact@egi.eu

Let's talk. Or
meet in person

Get in touch with us

www.egi.eu



This work is partially funded by the EU research and innovation programme